

CREAT  
THE  
UNIQUE

**JIALIFU** COLOR OPTIONS

HPL

NO. 23



1189 北方金柚



1209 胡桃棕木层



1118 暮光岑木



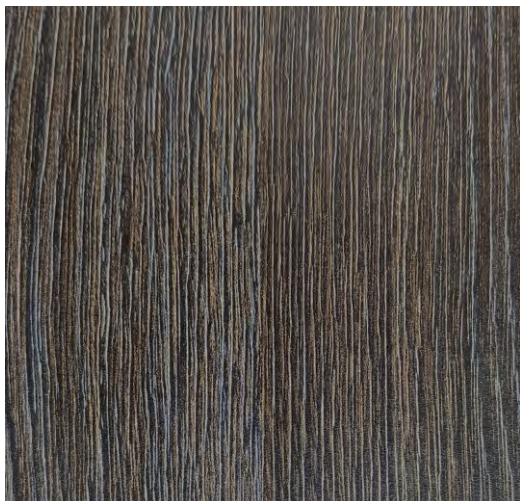
1218 南非金橡木



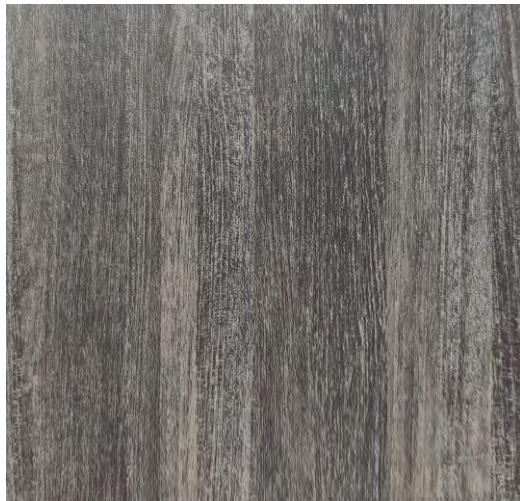
1227 园野橡木



1230 雪花橡木



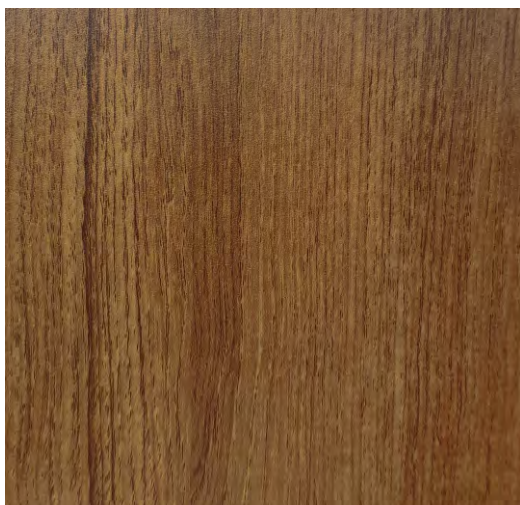
1123 瑞士莲灰橡



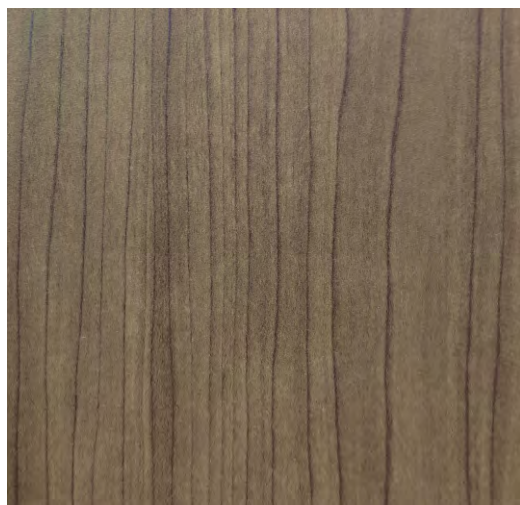
1117 苍灰木层



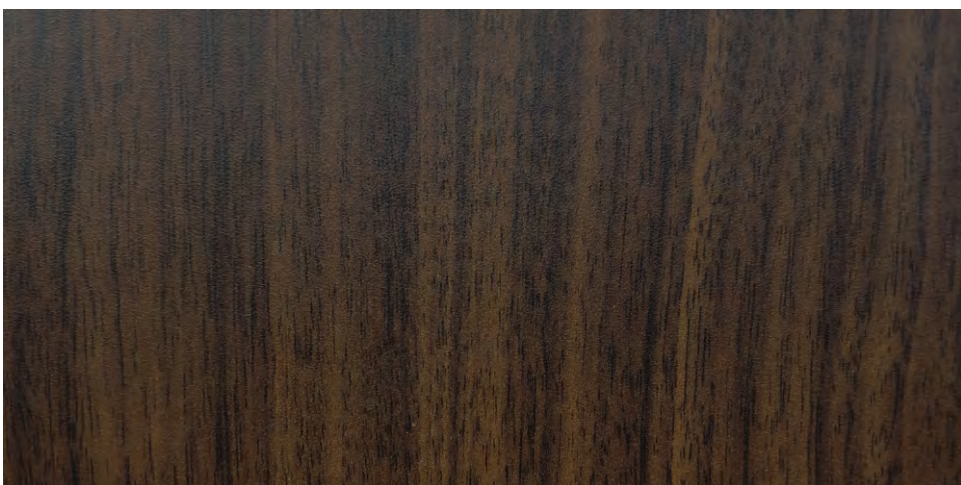
1185 牛津樱桃



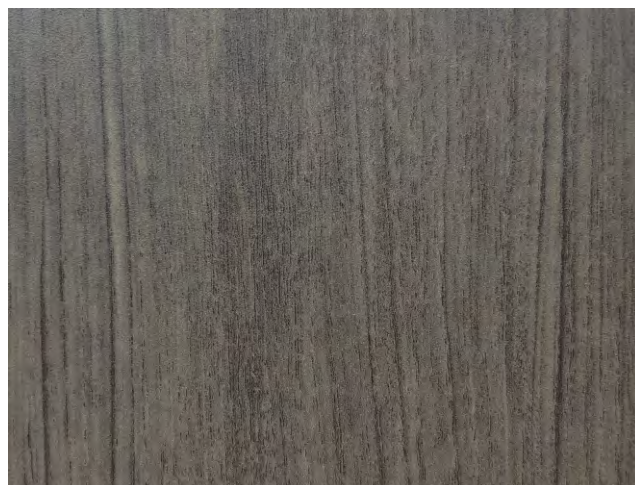
1196 沃拉波柚木



1140 丁香枫木



1159 林肯胡桃



1122 风化柚木



1171 法国白橡



1190 橄榄木



1184 巴西梨木



1121 水波西卡檬



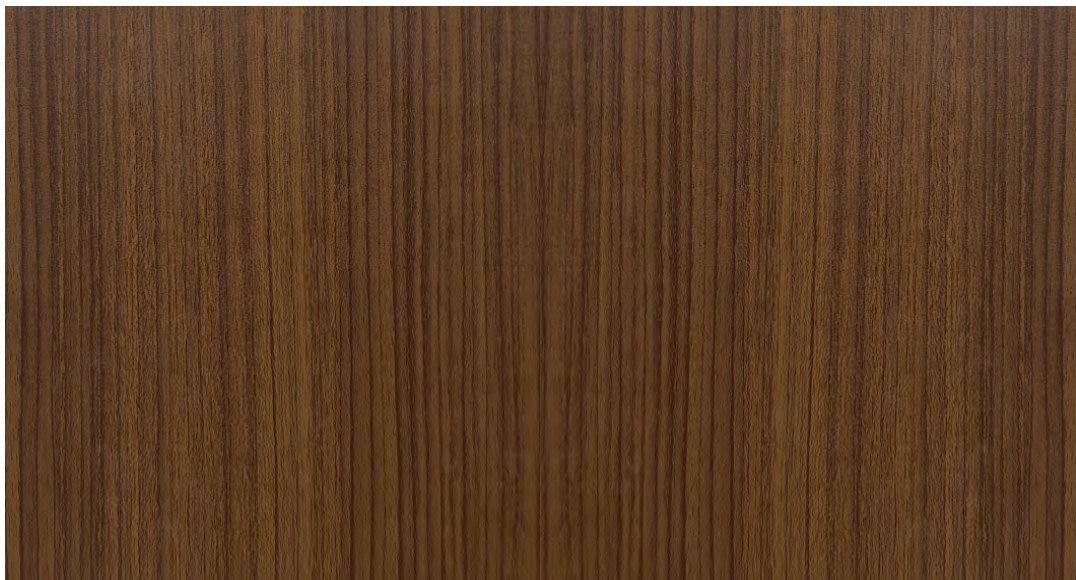
1121 轻和枫木



1204 狂野斑马木



1120 加利福尼亚橡



1153 缅甸柚木



1105老胡桃木



1193山陵枫木



1155天然柚木



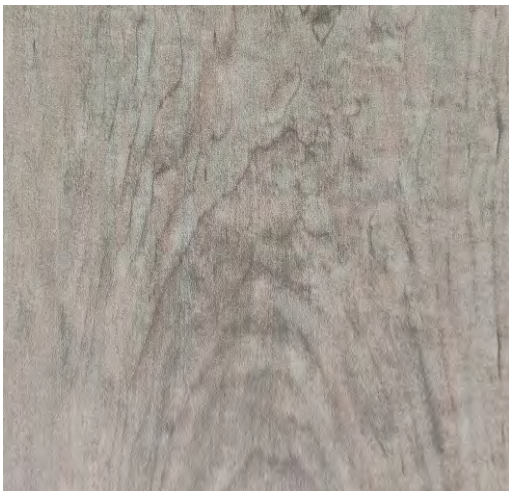
1107 原色桦木



1138 天然胡桃木



1145 奇幻胡桃木



1211 复古枫木



1212 象牙榆木



1207 意式洋梨



1116-原野胡桃木



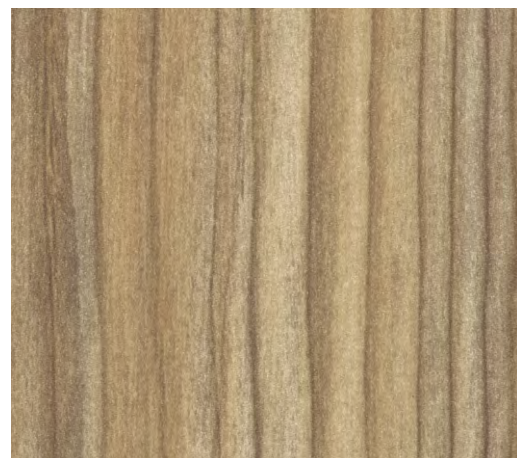
1168-北美橡木



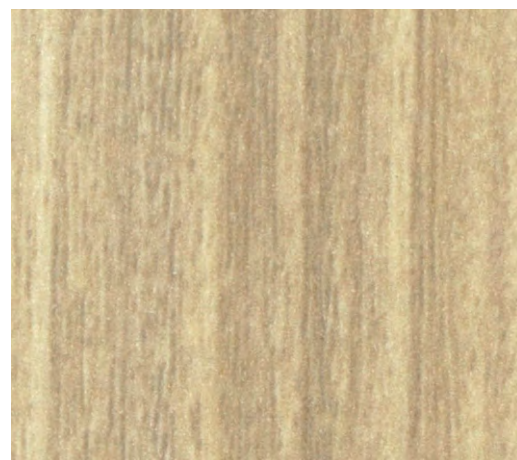
1128-老岑木



1134-蜜糖榆木



1130-摩卡冷杉



1137-浅麻红豆杉



1150-风化尤加利



1192-刚果胡桃木



1194-典藏樱花木



1213-粉晶橡木



1195-沙点柞木

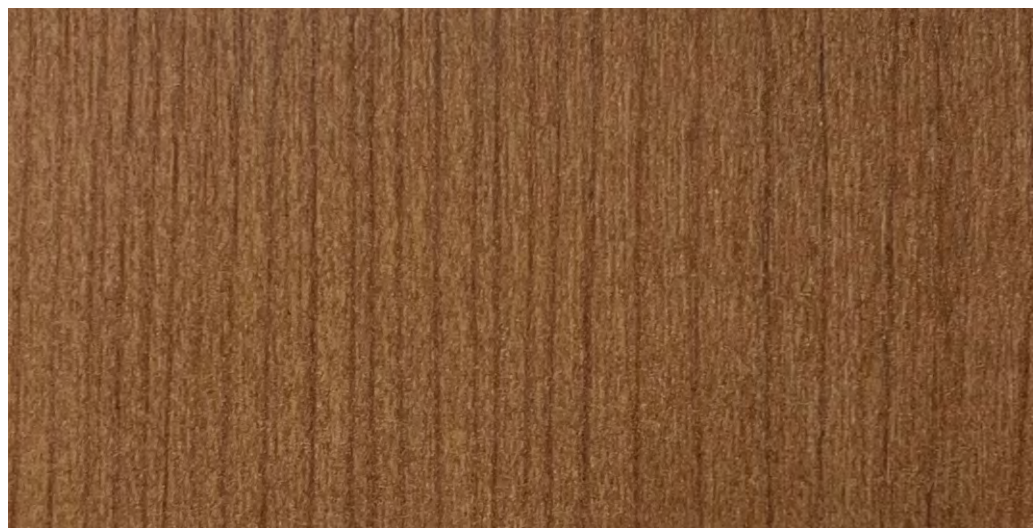


1197-琥珀枫木





1173-摩卡靛木



1180-榛果樱桃木



1183-天然樱桃木



1201-樱桃织木



1179-红山毛榉



1187-贵族樱桃木



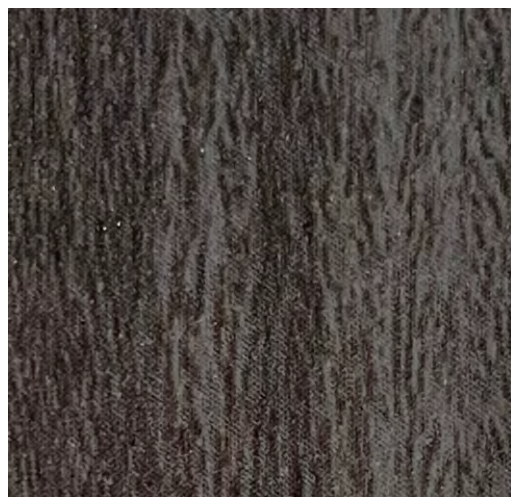
1199-经典胡桃木



1206-岩灰织木



1223-亚麻橡木



1203-古巴硬木



1200 集层木



1242-峡湾榆木



1219-原色鱼骨木



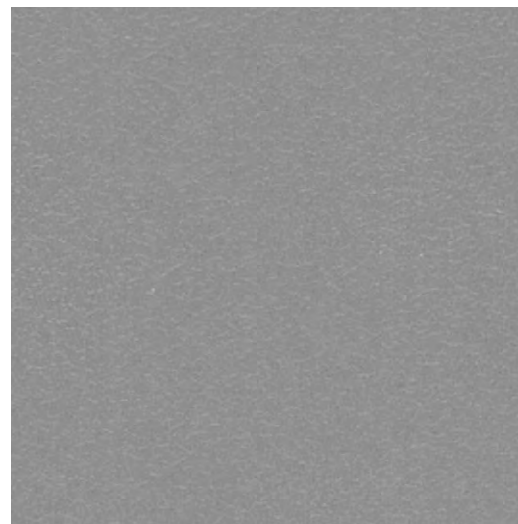
1202-个性铁刀木



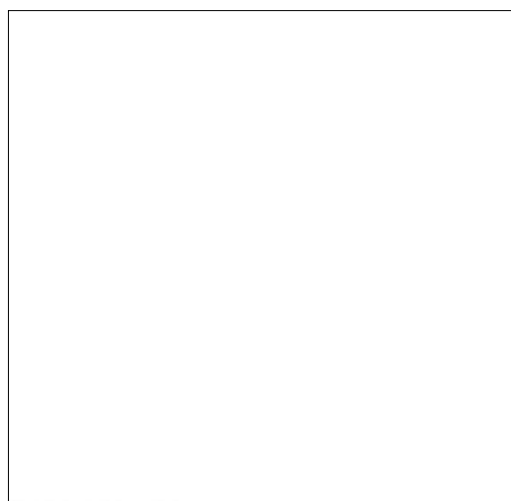
1220-驼色鱼骨木



1225-科罗拉之夜



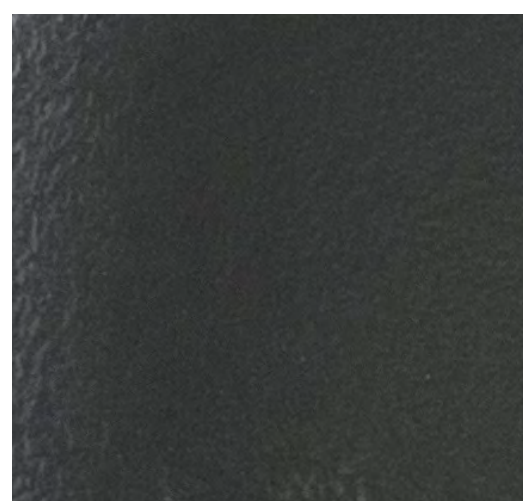
1249-鼠灰



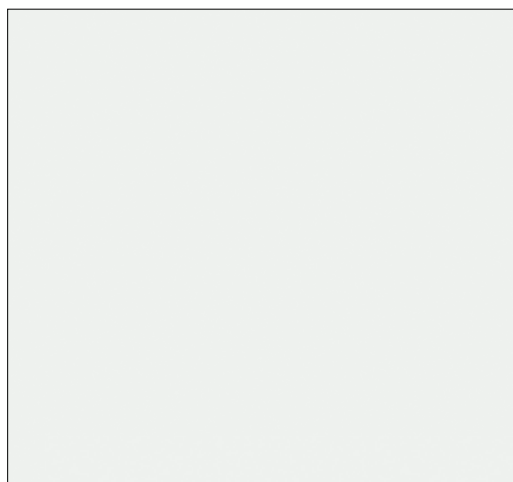
1248-印尼白



1222-北欧榆木



1246-铁灰



1247-皎白



1229-天然枫木



1215-兰斯洛特黄橡